

EOS R6

TECHNICAL SPECIFICATIONS



STEP INTO THE NEW ERA

Canon

EOS R6

STEP INTO THE NEW ERA



World's best Image Stabilization 8-stops¹ with Coordinated Control IS. 5-Axis In Body Image Stabilizer (IBIS). Image Stabilization is now possible when using non stabilized lenses. Combined with selected Canon RF lenses, IBIS works in tandem with lens-based Image Stabilizer to deliver coordinated control and reduce camera-shake blur.

IN-BODY
IMAGE
STABILIZER × **OPTICAL**
IMAGE
STABILIZER

The World's fastest AF focusing speed of 0.05 seconds². 100% autofocus (AF) frame coverage with Dual Pixel CMOS AF II. Track subjects to every corner of the frame with 100% x 100% AF frame coverage. Advanced AF subject tracking for human eye, face and head detect and animal eye, face and whole body detect.

Dual Pixel
CMOS **AF II**

Shoot at up to 20 frames per second with full autofocus and auto exposure tracking support. With Dual SD Card Slots, instant backup is possible by writing direct to both cards at the same time, or record one file type to one card and another type to the 2nd card.

Upto
20
Frames Per Sec

4K 60p movie recording and Full HD 120p. Flexible movie shooting with a range of compression options and frame rates to fit your vision.

EOS Movie
4K+ FULL HD

Incredible low light shooting capabilities, up to 102,400 ISO. Achieve low luminance auto focus. Canon EOS's first camera to offer Minimum EV for AF of EV-6.5³.

ISO
102400



*Shopper Media Survey February 2020, n=20,431

¹Among all interchangeable lens digital cameras. Based on Canon research as of 9th July 2020. ²Based on the CIPA standard, 8.0 stops with RF 24-105mm F4 L IS USM at a focal distance of 105mm. The RF 24-105mm F4 L IS USM has Coordinated IS and most IS performance. ³Depending on the time of purchase, the lens firmware needs to be updated. ⁴The Canon EOS R6's IS performance is the same as that of the Canon EOS R5. ⁵Among interchangeable lens digital mirrorless cameras incorporating 35mm full frame equivalent image sensors with phase-difference detection AF on the image plane and contrast detection AF. Based on Canon research as of 9th July 2020. ⁶The Canon EOS R6's AF speed is the same as that of the EOS R, EOS RP and EOS R5. Available in the market. Based on Canon research as of 9th July 2020. ⁷Calculated based on the resulting AF speed measured according to the CIPA guidelines. Varies depending on the shooting conditions and the lenses used. (Internal measurement method: Focusing brightness: EV 12 (room temperature, ISO 100); Shooting mode: M; Lens used: RF24-105mm F4 L IS USM (at focal length of 24mm). Still photo shooting with shutter button operation; AF method: 1-point AF (with Center AF point); AF operation: One-Shot AF.) ⁸Among all Canon's interchangeable lens digital cameras. Based on Canon research as of 9th July 2020. ⁹According to Canon standard measuring method. During still photo shooting, with an f/1.2 lens, Center AF point, One-Shot AF, at 23°C/73°F, ISO100. ¹⁰Excluding RF lenses with Defocus smoothing Coating.

EOS R6 | FEATURES

3.69MP EVF

Responsive electronic viewfinder (EVF) great for burst shooting and when switching from monitor to EVF.



3" 1.62 MILLION DOT VARI-ANGLE LCD TOUCH SCREEN

The variable-angle LCD monitor makes it easier to shoot from high and low angles, or shoot in portrait orientation.



DIGIC X

The DIGIC X provides high-speed processing which allows the EOS R6 to reach maximum shooting speeds. It also provides precise sharpness adjustment and noise reduction.

**DIGIC
X**

MULTI CONTROLLER (AKA AF JOYSTICK)

The multi controller facilitates quick and intuitive selection and adjustment of the AF frame.



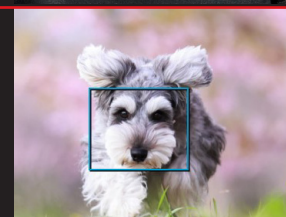
MODE DIAL

Switch easily between camera photo and video modes using the mode dial.



EYE DETECT AF + ANIMAL DETECT AF

Maintain stable focus and securely track the subject regardless of the distance and direction of the subject, or the subject's movement.



2X SD CARD

EOS R6 has dual card slots for SD memory cards of burst shooting of approx. 20MP still images, at speeds of up to approx. 20 fps, as well as internal recording of 4K 60p movies.



Dual Card Slots

HEIF FILE FORMAT

Similar in size to a JPG file, the HEIF file format provides the benefit of displaying over 1 billion colours.

HEIF

Canon

EOS R6 | SPECIFICATIONS

APPEARANCE AND CAMERA CONTROLS		
Lens mount	RF mount	
Mode dial	Yes	
Multi-controller	Yes	
Quick control dial 2	Yes	
Rating button	Yes	
Depth-of-field preview button	Yes	
IMAGE SENSOR		
Screen size	Full frame	
Effective pixels (max. approx. megapixels)	20.1	
IMAGE PROCESSOR		
	DIGIC X	
STILL PHOTO RECORDING		
HEIF support (in HDR PQ shooting)	Yes	
Focus bracketing (depth compositing)	Yes	
Dual Pixel RAW	Yes	
Maximum burst	RAW	Standard card 110 High-speed card 240
	JPEG Large / Fine	
Possible shots (at 23°C / 73°F, Screen, Smooth)	360	
MOVIE RECORDING		
Movie recording size	4K UHD (59.94 / 50.00)	Yes
	4K UHD (29.97, 23.98 / 25.00)	Yes
	Full HD High Frame Rate (119.88 / 100.00)	Yes
	Full HD (59.94, 29.97, 23.98 / 50.00, 25.00)	Yes
HDR PQ for movies	Yes	
Time-lapse movies	4K / Full HD	
Canon Log	Bit depth	10 bit
	Exposure control	Movie auto exposure Movie manual exposure
	ISO Auto setting	Yes
	10-bit internal (card) recording	Yes
Built-in microphone	Stereo	
IMAGE PROCESSING		
Picture Style	Yes (Default value changed)	
Clarity	Yes	

EOS R6 | SPECIFICATIONS (CONTINUED)

VIEWFINDER		
Type		Electronic viewfinder (EVF)
Dot count (approx.)		3.69 million dots
Viewfinder refresh rate (max.)		119.88 fps
Brightness adjustment		Yes
Colour tone adjustment		Yes
Fine-tuning colour tone		Yes
MONITOR		
Dot count (approx.)		1.62 million dots
Screen/viewfinder display (options based on whether screen is open)		Yes
Brightness adjustment		Yes
Colour tone adjustment		Yes
Touch-based menu screen magnified view		Yes
AUTOFOCUS		
AF method	Face+Tracking	Yes
	Spot AF	Yes
	1-point AF	Yes
	Expand AF area (above, below, left and right / around)	Yes
	Zone AF	9 x 9
	Large Zone AF vertical (max.)	9 x 21
	Large Zone AF horizontal (max.)	31 x 9
AF zone	Horizontal: Approx. 100%, Vertical: Approx. 100%	Yes
	Horizontal: Approx. 90%, Vertical: Approx. 100%	Yes
	Horizontal: Approx. 80%, Vertical: Approx. 80%	Yes
	Horizontal: Approx. 40%, Vertical: Approx. 60%	Yes
Eye detection (= Eye Detection AF)		Eye detection
Number of AF divisions available for automatic selection (max.): Still photos		39 x 27 (1053 divisions)
AF zone		Horizontal: Approx. 100%, Vertical: Approx. 100%

EOS R6 | SPECIFICATIONS (CONTINUED)

Focusing brightness range *Except RF lenses with a Defocus Smoothing (DS) coating	Still photos (with an f/1.2 lens, center AF point, One-Shot AF, at 23°C / 73°F and ISO 100)	EV –6.5 to 20
	Movies (with an f/1.2 lens, center AF point, One-Shot AF, at 23°C / 73°F, ISO 100, and 29.97 fps)	EV –5 to 20
Touch & drag AF		Yes
Servo AF characteristics (in still photo shooting)		Yes
Subject tracking settings	Subject to detect	People / Animals / No priority
EXPOSURE CONTROL		
Still photo modes	A+ / Fv / P / Tv / Av / M / B / C1 / C2 / C3	
Movie modes	A+*/Movie auto exposure/Movie manual exposure *Movie recording is possible in A+ mode by pressing the movie shooting button.	
ISO speed (still photos)	Normal	100–102400
	Expansion for lower speeds (ISO equivalent)	L: 50
	Expansion for faster speeds (ISO equivalent)	H: 204800
ISO speed (normal movies)	Normal	100 to 25600
	Expansion for faster speeds (ISO equivalent)	H: 204800
Metering brightness range	Still photos (at 23°C/73°F, ISO 100)	EV –3 to 20
	Movies (at 23°C/73°F, ISO 100, center-weighted average metering)	EV –1 to 20
Zebra display (in movie recording)		Yes
Multiple-exposure simulation		Yes
FLASH		
Continuous shooting priority (CSP) mode		Yes
Safety FE	(Automatically activated in continuous shooting priority mode)	
E-TTL balance		Yes
Continuous flash control		Yes
SHUTTER		
Shutter mode	Mechanical shutter	Yes
	Electronic 1st curtain	Yes
	Electronic shutter	Yes
Selection of shutter shutdown state		Yes
Shutter speed	1/8000–30 sec. Mechanical: X-sync at 1/200 sec. Elec. 1st-curtain: X-sync at 1/250 sec.	

EOS R6 | SPECIFICATIONS (CONTINUED)

CONTINUOUS SHOOTING SPEED		
High-speed continuous shooting +	Mechanical shutter / Electronic 1st-curtain	12 (in A mode)
High-speed continuous shooting	Mechanical shutter	6.0 (in A mode)
	Electronic 1st curtain	8.0 (in A mode)
Low-speed continuous shooting	Mechanical shutter / Electronic 1st-curtain	3.0
High-speed continuous shooting +	Electronic shutter	20
High-speed continuous shooting	Electronic shutter	20
Low-speed continuous shooting	Electronic shutter	20
TIMER SHOOTING		
Bulb timer		Yes
Interval timer		Yes
Movie self-timer		Yes
IMAGE STABILIZATION (IS MODE)		
Controlled by lenses		Yes
Controlled by camera		Yes
Co-ordinated control		Yes
IS effectiveness, in number of stops (still photos)	IS-equipped lenses (co-ordinated control)	8.0 stops
Movie digital IS		Yes
Based on focal length (with lenses from which focal length data cannot be acquired)		Yes
IMAGE PROCESSING AFTER SHOOTING		
RAW image processing	Adjust face lighting (Auto Lighting Optimizer)	Yes
	Clarity	Yes
HEIF→JPEG conversion		Yes
Frame grab		4K
EXTERNAL INTERFACE		
Digital terminal		USB Type-C
POWER SOURCE		
Overheat control (for movies)		Yes
USB Power Adapter PD-E1	Charging	Yes
	Powering	Yes

EOS R6 | SPECIFICATIONS (CONTINUED)

WIRELESS COMMUNICATION

image.canon automatic upload	Yes
------------------------------	-----

RECORDING MEDIA

Recording media	SD, SDHC, SDXC memory cards
-----------------	-----------------------------

Card slots	2
------------	---

DIMENSIONS AND WEIGHT

Dimensions (approx. width x height x depth in mm, based on CIPA standards)	138.4 x 97.5 x 88.4
---	---------------------

Weight (approx. ** g including battery and memory cards)	680
--	-----



Canon

Canon

www.canon.com.au